



# BHT-002 Series WiFi Thermostat User Guide



## For Water Heating/Boiler/Electric Heating

### Thermostat Colors:

- 002FB: full black
- 002BW: black and white
- 002FW: full white
- 002WB: white and black

## Welcome

Thank you for your purchase. Your new thermostat will provide uniform and comfortable temperature control throughout every room in your property. We bring together technology, craftsmanship and the highest quality materials to provide you with a safe, reliable product combined with sleek, contemporary design.

Please read this installation/programming manual for comprehensive instructions on installing and operating your thermostat. Please also ensure a suitably qualified person installs your thermostat and complies with all local regulations.

### In the box you will find

- Thermostat 1pc
- User Guide 1pc
- QC Passed 1pc
- Screws 2pc
- Floor Sensor (2.5m) 1pc
- (Floor sensor is Optional)

### ABOUT YOUR THERMOSTATS

The BHT-002 series range has been developed to control electric underfloor, water heating or water/gas boiler systems. These units are designed for use in commercial, industrial, civil and domestic properties

### MODEL DEFINITION

- GA: Water heating, 3A
- GC: Water/Gas Boiler, 3A
- GB: Electric floor Heating, 16A
- L: Backlight
- P: Weekly Programmable
- W: Wifi
- N: Modbus Communication
- B: BACnet Communication
- S2: Both internal sensor and floor external sensor

For example: BHT-002 GCLP

### FEATURES

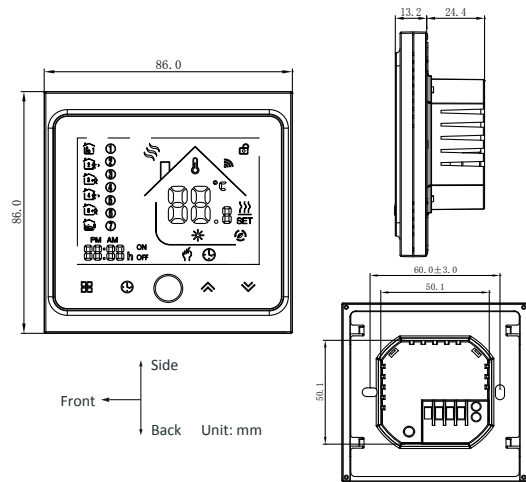
#### On Appearance

1. Convenient operation creates convenient life.
2. Options of black and white housing.
3. Fashion design blends in with any decor.
4. Touch Screen display with backlight is easy to read, even in the dark.
5. Bright buttons always remind you the world truly exist.
6. Easy UI interface could be used even by child.

#### On Functionality

1. Powerful functions are available such as Modbus/WIFI etc,
2. 0.5°C Accuracy keeps temperature within the level you set.
3. Data memory when power is off.
4. 5+2 six periods programmable maximize comfort and economy.
5. Create thermostat group to Centralized control
6. Integrated with Amazon Echo, Google Home, Tmall Genie, IFTTT.
7. All setting languages synchronize your time zone, address and language.
8. No limit to add rooms and support Smart Scene.

### DIMENSION



### TECHNICAL DATA

Power Supply: 95 ~ 240 VAC, 50 ~ 60HZ  
Current Load: 3A (water heating/water boiler/gas boiler)  
16A (electric heating)

- Sensor: NTC
- Accuracy: ±0.5°C or ±1°F
- Set Temp. Range: 5 -35°C
- Display Temp. Range: 5 ~ 99°C
- Ambient Temp.: 0 ~ 45°C
- Ambient Humidity: 5 ~ 95% RH (Non Condensing)
- Storage Temp.: -5 ~ 45°C
- Power Consumption: <1.5W
- Timing Error: < 1%
- Shell Material: PC +ABS ( flame retardant)
- Installation Box: 86 \* 86mm Square or European 60mm Round Box
- Wire Terminals: Wire 2 x 1.5 mm2 or 1 x 2.5 mm2
- Protection Class: IP 20
- Buttons: Capacitive Touch Buttons

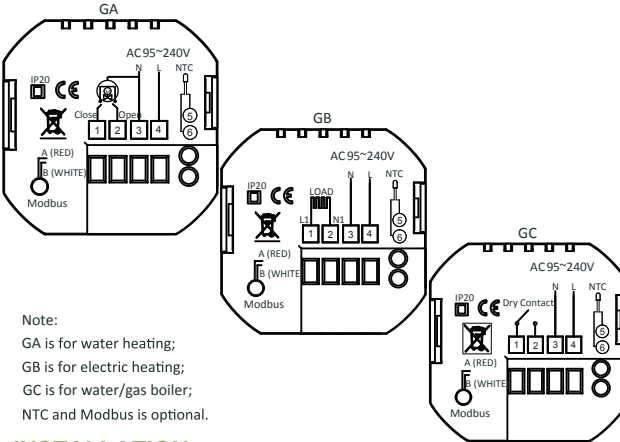
### BEFORE WIRING AND INSTALLING...

1. Read these instructions carefully. Failure to follow them could damage the product or cause a hazardous condition.
2. Check the ratings given in the instructions and on the product to make sure the product is suitable for your application.
3. Installer must be a trained, experienced service technician.
4. After installation is complete, check out product operation as provided in these instructions.



**CAUTION**  
Electrical Shock or Equipment Damage Hazard. Can shock individuals or short equipment circuitry.  
Disconnect power supply before installation.

### WIRING

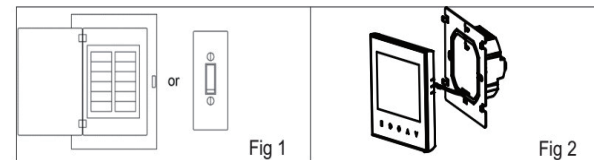


Note:  
GA is for water heating;  
GB is for electric heating;  
GC is for water/gas boiler;  
NTC and Modbus is optional.

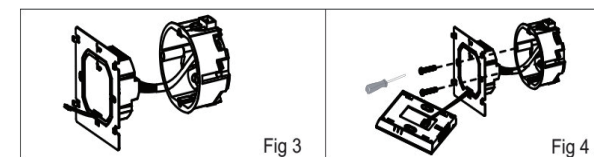
### INSTALLATION

Your thermostat is suitable for installation within a standard 86mm pattress box or European 60mm pattress box.

- Step 1. Keep power off. See Fig 1.
- Step 2. Remove the mounting Plate by rotating the LCD part. See Fig 2.

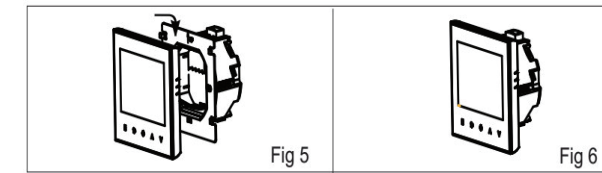


- Step 3. Connect power supply, load into the appropriate terminals. (see "Wiring your thermostat" for details and Fig 3).
- Step 4. Fix the mounting plate into the wall with screws in the box. See Fig 4.

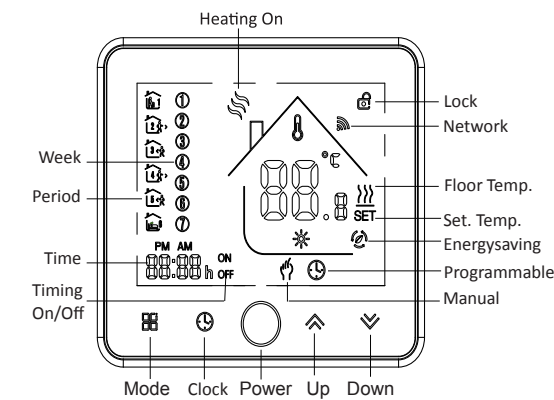


- Step 5. Fasten body of thermostat and the mounting plate through rotating. See Fig 5.

Step 6. Installation complete. See Fig 6.



### HOME SCREEN QUICK REFERENCE



### OPERATION

#### During Power On

1. Power On/off: Press the power button to turn the thermostat on/off.
2. Manual & Programmable

Touch the mode icon (mode) to change between manual mode and programme mode. In the manual mode, the power icon will display in the bottom of the screen. In programmable mode, the period icon will show in the left side.

#### 3. Setting Temperature

In the mode of programmable, set temperature, time could not be adjusted. If the user want to change, please go to manual mode or programmable mode.

In the mode of manual, press the up/down arrows to set the desired temperature.

#### 4. Adjusting/Setting the Clock

Touch the clock icon to set minute, hour and weekday (1 = Monday, 2 = Tuesday etc.) by using the up/down arrows. Press the confirm icon once more to confirm and exit.

#### 5. Locking your Thermostat

Press and hold the up/down arrows for 5 seconds to lock/unlock your thermostat. In item 3 of high senior options, you can select full lock or half lock.

#### 6. Adjusting/setting the Program Schedules

When Wi-Fi connection is made, your thermostat will automatically accept the program schedule made via the APP on your device (see below for detailed instructions) To set the program schedules through your thermostat (NOT via your smartphone/tablet) simply follow the instructions as below:

**Please note: Setting the programme schedule through your thermostat can only be carried out if there is no Wi-Fi connection between your thermostat and smartphone/tablet.**

Touch the mode icon to change between manual mode and programme mode. In the manual mode, the power icon will display in the bottom of the screen. In programme mode, touch and hold the mode icon until the weekday schedule settings appear (1 2 3 4 5 will show along the left of the screen). Use the up/down arrows to adjust the on time.

Press the clock icon and use the up/down arrows to set the time (1st period). Press the clock icon again and use the up/down arrows to set the temp. Press the clock icon and use the up/down arrows to set the time and temp. (2nd period). Repeat this process for periods 3 4 and 5 6. Press the clock icon once more to enter the Saturday schedule settings (6 will show along the left of the screen). Repeat the above process to set the period and temp. and Sunday schedule. Press the clock icon once more to confirm and exit.

#### Default settings for program schedule

Time display	WEEKDAY (MONDAY – FRIDAY) (1 2 3 4 5 shows on screen)		WEEKEND (SATURDAY) (6 shows on screen)		WEEKEND (SUNDAY) (7 shows on screen)	
	TIME	TEMPERATURE	TIME	TEMPERATURE	TIME	TEMPERATURE
Period 1	06:00	20°C	06:00	20°C	06:00	20°C
Period 2	08:00	15°C	08:00	20°C	08:00	20°C
Period 3	11:30	15°C	11:30	20°C	11:30	20°C
Period 4	13:30	15°C	13:30	20°C	13:30	20°C
Period 5	17:00	22°C	17:00	20°C	17:00	20°C
Period 6	22:00	15°C	22:00	15°C	22:00	15°C

A separate schedule may be set for weekdays (Mon – Fri) and for weekends (Sat or Sun).

#### 7. Checking the Temperature of Floor Sensor

Press and hold the down arrow for 5 seconds to display the temp. of floor sensor.

#### 8. Return To Factory Default

Press the Restore Manufacturer Defaults, you can reset thermostat. Steps: Open your app - go into your room - click menu on the top right corner - move to the end - Press Restore Manufacturer Defaults.

#### 9 Setting the Functions and Options During Power Off

When power is off, press and hold the mode icon and the power icon at the same time for 5 sec. in order to reach system function. Then press the mode icon to scroll through the available functions, and use the up/down arrows to change the available options. All settings are confirmed automatically.

Code	Function	Setting and options	Default
1	Temperature compensation	-7 to +7 °C (for internal sensor)	-1
2	Deadzone Temperature	1 ~ 5 °C	1
3	Button locking	00: All buttons are locked except power button. 01: All buttons are locked.	01
4	Sensor types	In: Internal Sensor (to control or limit the temp.) Ex: External Sensor (to control or limit the temp.) Ou: Only external sensor AL: Internal/ External Sensor (Internal sensor to control the temp., external sensor to limit the temp.)	AL
5	Min. Set Temp.	5-15 °C	05
6	Max. Set Temp.	15-45 °C	35
7	Display Mode	00: Display both settemp. and room temp. 01: Display settemp. only	00
8	Low temperature protection setting.	0-10 °C	00
9	High temperature protection setting.	25-70 °C	45
A	Economy Mode	00: Non-energy saving Mode 01: Energy saving mode	0
B	Economy Temp.	0-30 °C	20

## ABOUT WIFI

### WI-FI CONNECTION

Before using your Wi-Fi thermostat for the first time, you must configure the Wi-Fi signal and settings through your smartphone or tablet. This will allow communication between your connected devices

#### Step 1 Download your APP (Fig 1-1)



Fig 1-1



Fig 1-2 IOS



Fig 1-3 Android

For IOS devices, search for "Smart Life" in Apple Store and download. Alternatively, scan the relevant QR code here (Fig 1-2).

For Android devices, search for "Smart Life" in Google Play and download. Alternatively, scan the relevant QR code (Fig 1-3).

#### Step 2 Register your account

Open "Smart Life", you will get a piece of notification (Fig 2-1). Click *Allow* to go into your page of register (Fig 2-2). Press *register* and enter your phone no. or email (Fig 2-3) then you can get a verification code. Input your password and confirm (Fig 2-4) to complete your registration. If you have account, please log in.

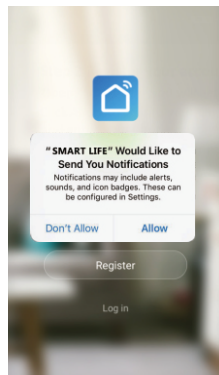


Fig 2-1

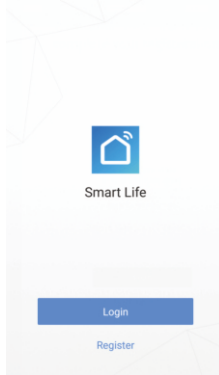


Fig 2-2

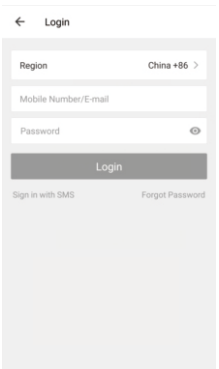


Fig 2-3

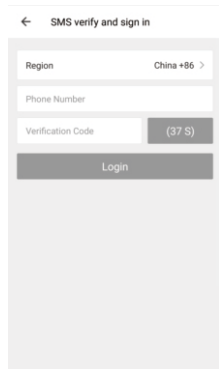


Fig 2-4

#### Step 3 Connect your Wi-Fi signal

##### On your thermostat

With power off, press and hold the for eight (8) seconds. The backlight will be on and the icon will flash one time per sec..

**Then, go back to the home page of your app**

Press the on the upper right corner of the page (see Fig 3-1-1) to add your device. Click Confirm indicator rapidly blink (Fig 3-2) then select your network and back to your app to enter the password of your wireless router (Fig 3-3) and confirm. The app will connect automatically (Fig 3-4). This may typically take up to 5~90 seconds to complete. Your room name could be edited when the device is connected (Fig 4-4).

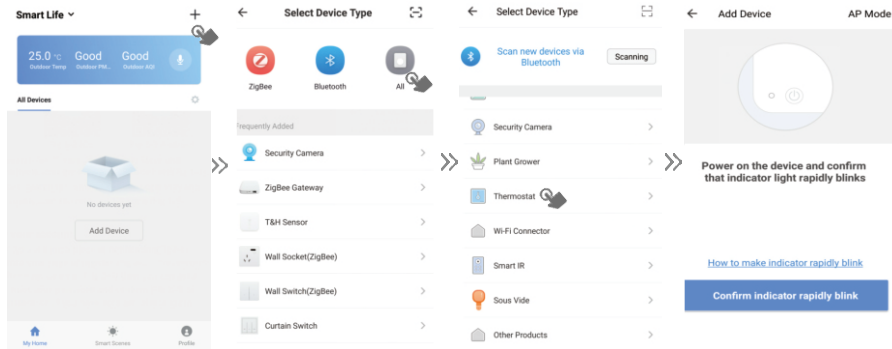


Fig 3-1-1

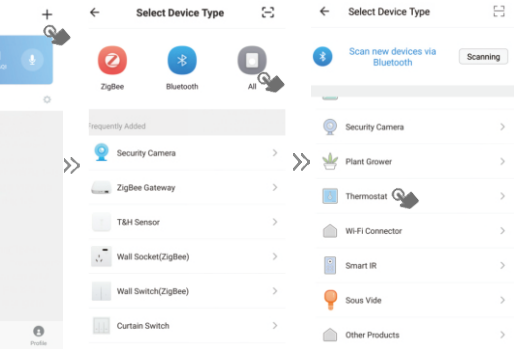


Fig 3-1-2

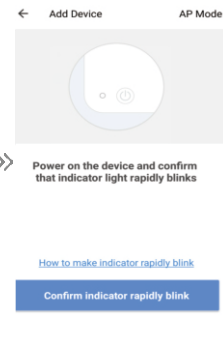


Fig 3-2

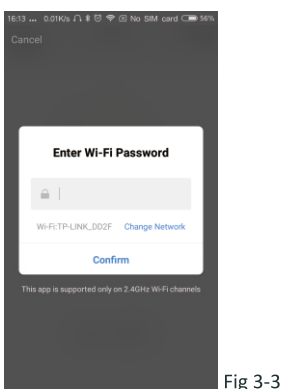


Fig 3-3

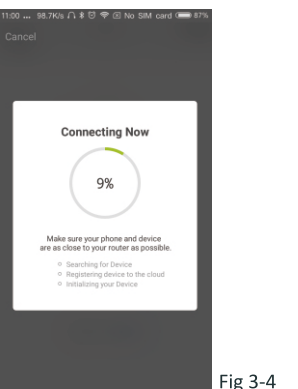


Fig 3-4

This is EZ mode which provides fast network connection between your app and your device. If your router doesn't support it or your wifi signal is weak or you can not connect by EZ mode, press the AP Mode on the upper right corner in Fig 3-2.

**If you have connected your thermostat successfully, please ignore the AP setting as below.**

##### On your thermostat

With power off, press and hold the for eight (8) seconds. The backlight will be on and the icon will flash one time per sec.. Press and hold the for eight (8) seconds again. The icon will flash one time every (3) seconds.

**Then, go back to the home page of your app**

Click Confirm indicator slowly blink (Fig 4-1) then select your network and back to your app to enter the password of your wireless router (Fig 3-3) and confirm. The app will go into the page in Fig 4-2.

Press *Connect now* to select the wifi signal Smartlife-XXXX of your thermostat (Fig 4-3). Go back to your app and click *Connect now* then the app will connect automatically (Fig 3-4). This may typically take up to 5~90 seconds to complete. Your room name could be edited when the device is connected (Fig 4-4).

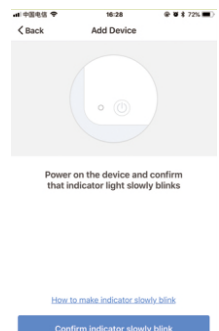


Fig 4-1

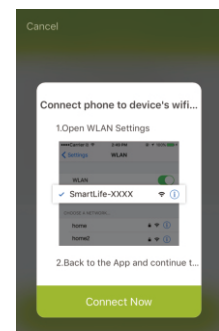


Fig 4-2

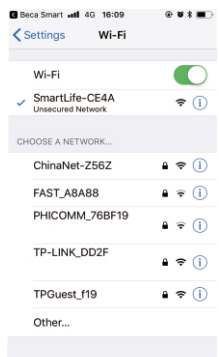


Fig 4-3

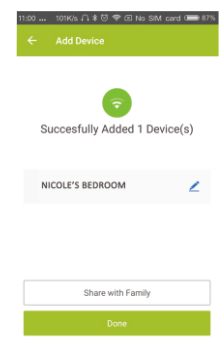


Fig 4-4

## PROGRAMMING YOUR THERMOSTAT

When your room is established successfully, it will display on the home screen (Fig 5-1). The round button is to turn on/off your room. Click the line into beginning programming your thermostat.

- Power on/off button, press it, turn on the device, press it again, turn off the device
- Lock/Unlock button. If button is green, the screen is "Locked", if button is grey, the screen is "Unlocked".
- Economy button, in this mode, the temperature will be kept 20 degrees. This temperature cannot be changed or adjusted.
- Manual button: In this mode, your heating can be set manually (i.e. Not using the pre-programmed settings)
- Program button. When this button shows, your thermostat is in program mode and will follow any pre-set heating schedule. When in Manual mode, press the button to select mode and vice-versa.

\* Slide the yellow button backwards or forwards to manually adjust the temperature, the temperature will show in the centre

of the page. After a few seconds the current room temperature will show.

\* When in Program mode, click on the schedule setting (at the bottom of the page) to be taken to the schedule page (See Fig 5-2) where you can simply click on the working days (Mon-Fri) and then the time/Temp. to adjust to your preferred schedule. \* You can set 6 periods - time and temp. (Fig 5-3)

\* Repeat the above after clicking on the Weekend (Sat-Sun) settings at the top of the page

\* Once your schedule has been set, click on SAVE and the app will send the programming to your thermostat and confirm the schedule has been saved.

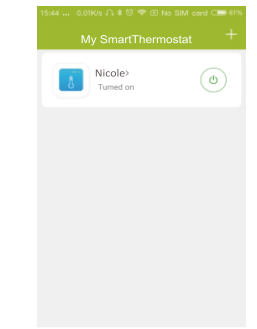


Fig 5-1

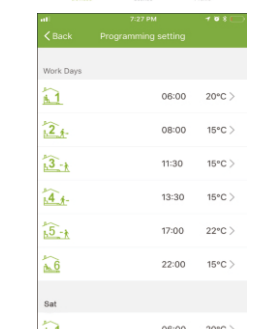


Fig 5-3

#### How to create a group?

Press the menu button in the red circle (Fig 5-2) then click *Create Group* (Fig 6-1). Select all the rooms you want and confirm.

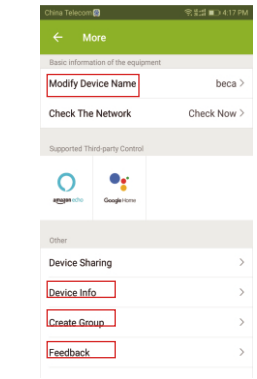


Fig 6-1

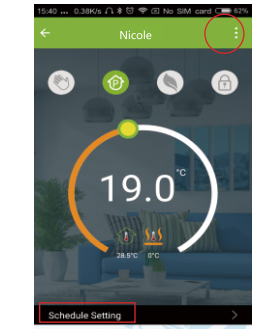


Fig 5-2

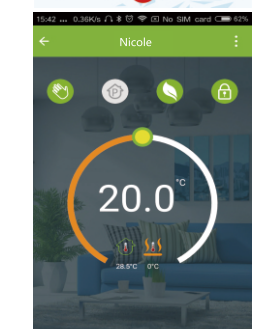


Fig 5-4

The one who creates this group can control all the rooms at the same time.

##### Note

Except to create the group, in this menu page, you can also modify your device name, share your device, get the information of your device.

#### How to share your device with your family member?

Way 1: Mentioned in the above.

Way 2: Click your Profile at the right bottom of your main page (Fig 6-2). Select Device Sharing then add the account you want to share.

You can see the sharing account you have sent and the device you have shared in this sharing page.

You don't need to do anything if you are the one shared.

You can add as many as rooms you want.

#### How to connect your device to Amazon Echo or Google Home?

In your profile, click *Integration* into the using page. Press *Use Now* > (Fig 7-1) for your Amazon Echo or Google Home or Tmall Genie or IFTTT then you can see the operation steps.

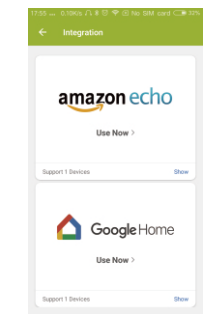


Fig 7-1

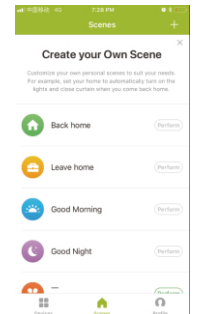


Fig 7-2

#### What is your Smart Scene and How to use it?

Customize your own personal scenes to suit your needs. For example, set your home to automatically turn on thermostat when you back home (Fig 7-2). Press button into the setting

Step 1: You can set a condition for Task like Temperature below 20 degrees, then click Save. (Condition: Temp., Humidity, Weather, PM2.5, Air Quality, Sunrise/Sunset, Device)

Step 2: Add a task. Press to Select Device (Power, Set Temp, Lock Mode) to act, then Save. If you want to delete the scene, you can press Delete in the end.

**NOTE: The room sound could be turned on/off in PROFILE-SETTING-SOUND. The sound is matched with the default of your system.**

#### SIMPLE EXCEPTION HANDLING

No.	Phenomenons	Handling
1	Power is on but without display.	* Check if the terminals between LCD panel and Power Unit Box is loosen.
2	Without output but display works.	* Use a new LCD panel or new Power Unit Box to replace the old one.
3	Room Temp. is a little different from the actual.	* Do temperature calibration in item 1 of high senior options

## SERVICE

**Your thermostat carries an 24 months warranty from date of purchase. Service outwith the warranty period may incur a charge. More detail please contact with us directly.**

